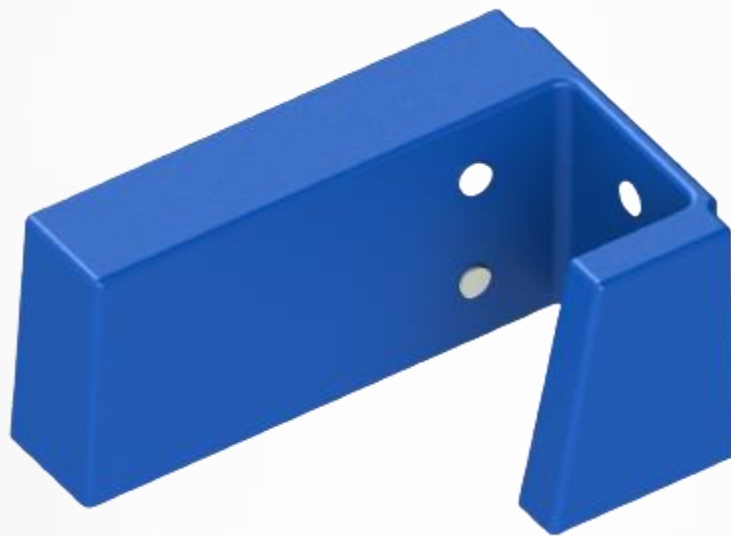




Door Alert
for increased security



Simple Mounting
Installation in seconds



Wireless Communication
for remote device management

C-Type

Sensors

Light

Light values can be measured up to 65.000 [equals 125 lux, light value of 1 equals 0,0019 lux]

Temperature

Operating range: -30 °C to +65 °C

Accuracy:

±0.3 °C (25 °C to 45 °C)

±1.0 °C (0 °C to 65 °C)

±2.0 °C (-30 °C to 65 °C)

Humidity

Accuracy: ±2 % of relative humidity

Shock

3-dimensional shock detection up to 14 g

Vibration

Accuracy: 0,4 g2/Hz from 0 to 4,4 g2/Hz

Tilt

Accuracy: 1° (0° to 180°)

NOTE: Measured relatively to a horizontal position

Light

Tracking

GPS location tracking -159 dBm sensitivity
GPS, Galileo, GLONASS

Battery

5000 mAh Li-Pol non rechargeable

Lasts 24 days with a communication frequency of 1 hour (modifiable)

Transmission Type

GPRS/EDGE, LTE Cat-M

Cellular Connectivity

Quad-band GSM/GPRS

Mounting & Activation

Easy to install with integrated magnets for self-activation

Dry container doors

Dimensions

135 x 98 x 65 mm

Weight

270 g

IP Rating

65

Certifications & Approvals

UN38,3, CE, MSDS, RoHs